



20 Chantry Place, Sweetlake Meadow, Shrewsbury SY3 9FP

3 bedroom semi-detached house—£290,000 Freehold

20 Chantry Place, Sweetlake Meadow, Shrewsbury SY3 9FP

£290,000 Freehold—3 bedroom semi-detached house

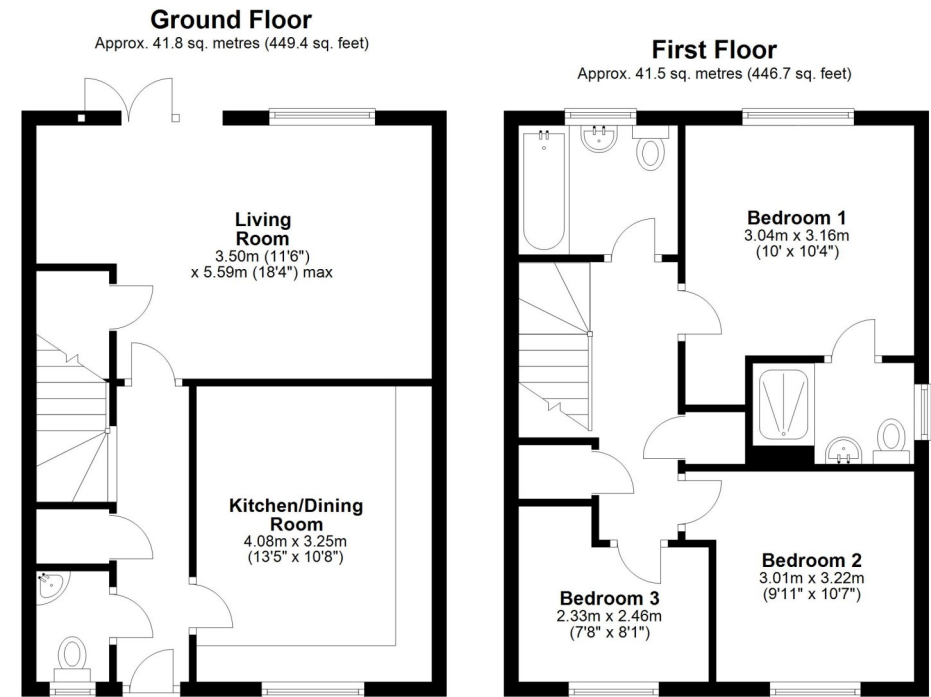
sales@cgpooks.co.uk

A very attractively designed, modern and stylish semi-detached house, located in a fantastic position on the fringe of this popular development, next to the beautiful Mousecroft nature reserve and just a few minute's walk from both Priory and Meole secondary schools.

KEY FEATURES

- Covered entrance area to hall with built in storage and cloakroom.
- Living room with further built-in storage, window and glazed double doors to rear garden.
- Impressive kitchen/dining room with an extensive range of fitted units, integrated appliances, tile effect flooring and nice outlook to the front.
- Staircase from hall to the first floor landing where there are 3 bedrooms and a family bathroom. The main bedroom also has an en suite shower room.
- Double glazed windows and gas fired central heating. The loft is professionally boarded with a retractable ladder for access
- Block paved driveway providing parking for 2 cars with established borders, pathway to side and an area of lawn.
- Paved rear garden with a large timber and glazed summer house that has an adjoining store.
- Fantastic location on the fringe of town, in a quiet cul-de-sac with a lovely private outlook to front.

Coopergreenpooks.co.uk



Cooper Green Pooks
3 Barker Street
Shrewsbury
SY1 1QF

www.cgpooks.co.uk
sales@cgpooks.co.uk
01743 276666



Total area: approx. 83.3 sq. metres (896.1 sq. feet)







20 Chantry Place, Sweetlake Meadow, Shrewsbury SY3 9FP

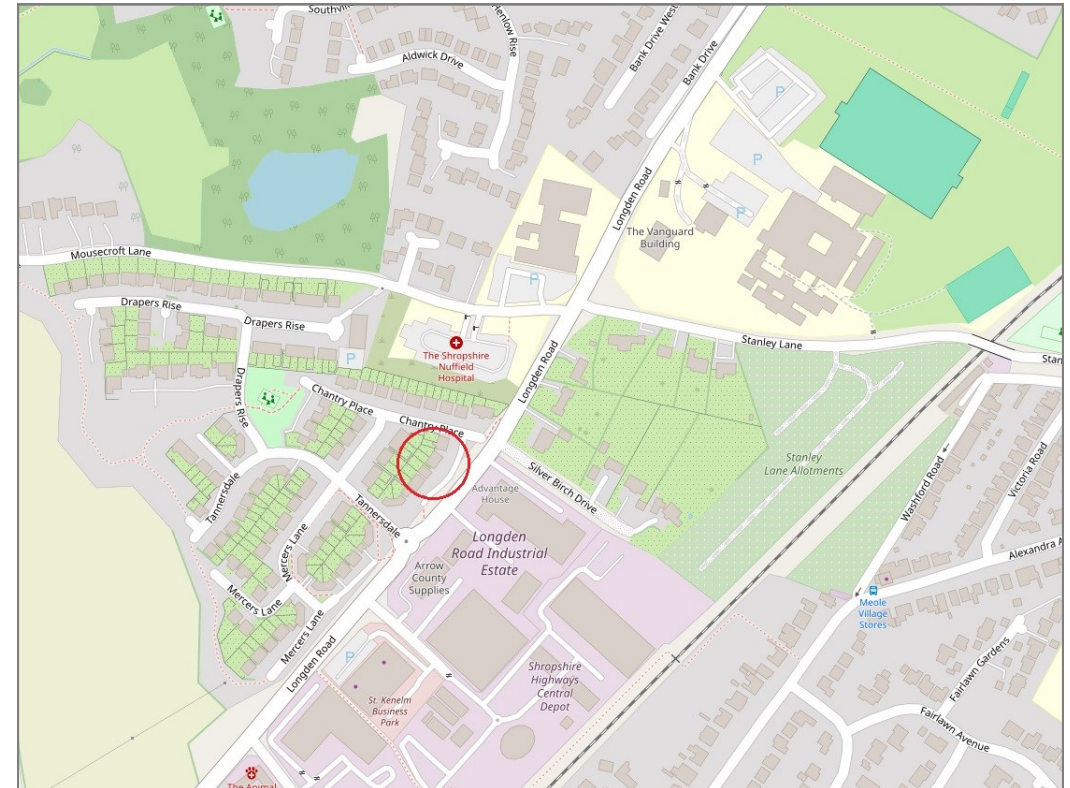
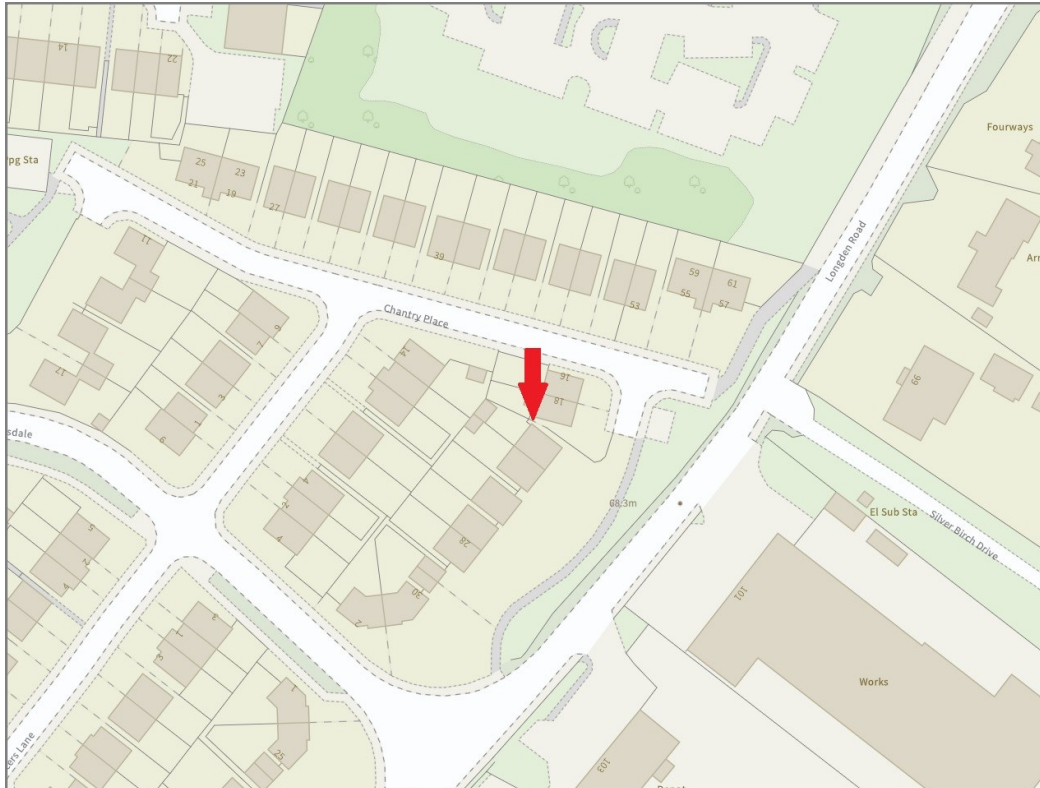
£290,000 Freehold—3 bedroom semi-detached house

sales@cgpooks.co.uk

rightmove

onTheMarket.com

RICS®
Regulated by RICS



BOUNDARIES NOT CONFIRMED

Tenure	Freehold
Local Authority	Shropshire Council
Council Tax	Band C
EPC Band	Band B
Services	All mains services are connected

Expert mortgage advice available

3 Barker St, Shrewsbury SY1 1QF

Cooper Green Pooks
01743 276666



Your home may be repossessed if you do not keep up repayments on your mortgage.

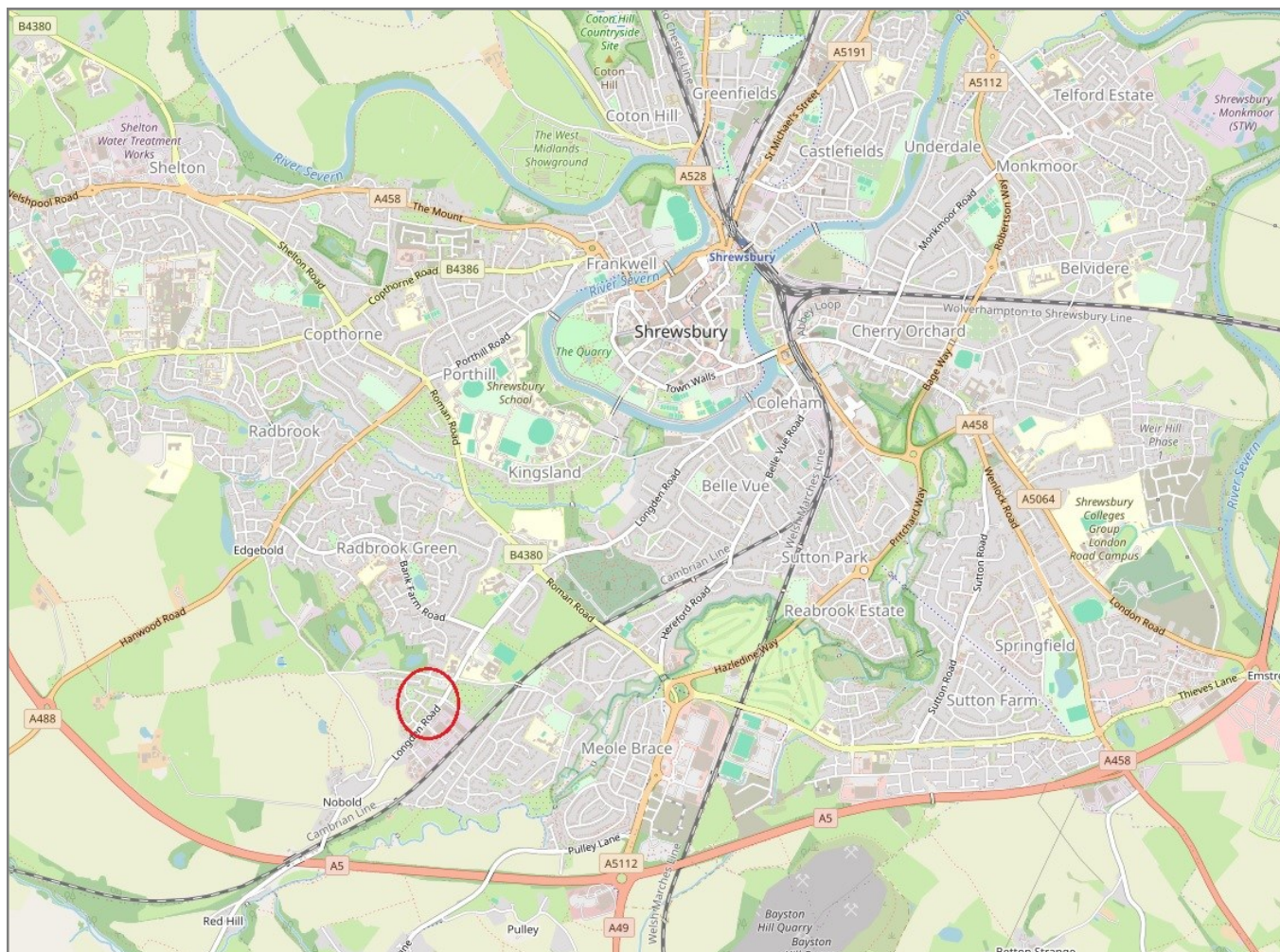
There may be a fee for mortgage advice. The actual amount you pay will depend upon your circumstances. The fee is up to 1% but a typical fee is 0.3% of the amount borrowed.

20 Chantry Place, Sweetlake Meadow, Shrewsbury SY3 9FP

Coopergreenpooks.co.uk

£290,000 Freehold—3 bedroom semi-detached house

sales@cgpooks.co.uk



IMPORTANT NOTICE: Cooper Green Pools for themselves and for the lessors or vendors of this property whose agents they are give notice that: 1 No appliances, services or service installations have been tested and no warranty as to suitability or serviceability is implied. Any prospective purchaser or lessee is advised to obtain verification from their surveyor or solicitor. 2. The particulars are set out as a general outline only for the guidance of the intended purchasers or lessees and do not constitute, nor constitute part of, an offer or contract. 3. All descriptions, reference to condition and necessary permissions for use and occupation and other details are given in good faith and are believed to be correct but any intending purchasers or lessees should not rely on them as statements or representation of fact but satisfy themselves by inspection or otherwise as to the correctness of each of them. 4. No person in the employment of Cooper Green Pools has any authority to make or give any representation or warranty whatsoever in relation to this property. 5. All rentals and prices are quoted exclusive of Stamp Duty, legal and surveyors fees and any other associated purchasers or lessees costs. 6. Floor plans are indicative only and should not be relied on. 7. The plan showing the boundary of the property is indicative only and has not been checked against the legal title so should not be relied on. 8. All dimensions, floor areas and site areas are only approximate and should not be relied on. Dimensions are generally maximum room dimension.